

# Comprehensive Data Analysis by Kevyn.ai

## Executive Summary

This analysis examines Premier League matches, providing insights into various aspects such as team performance, possession, and match outcomes. Key findings include the relationship between possession and match outcomes, the impact of home advantage, and the distribution of fouls and cards.

## Table of Contents

1. Introduction
2. Data Analysis Objectives
3. Exploratory Data Analysis
4. Results
5. Interpretation
6. Discussion
7. Conclusion

## Introduction

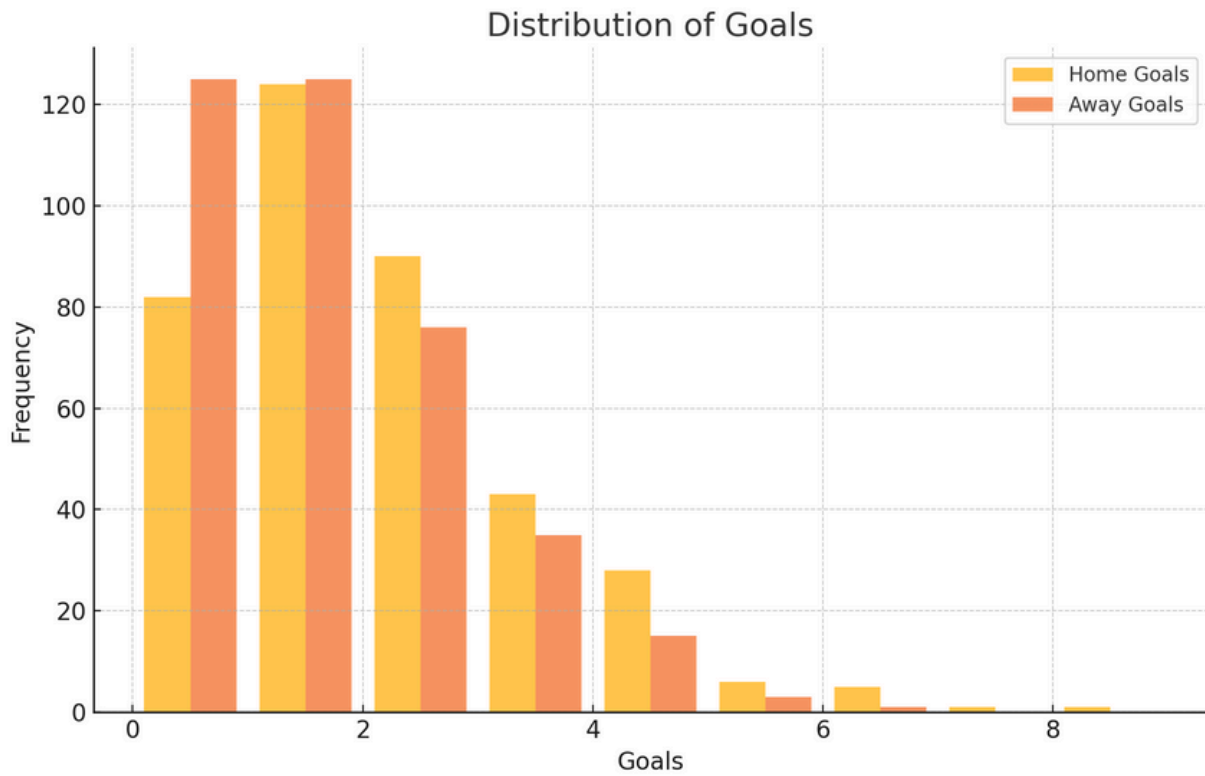
The data encompasses Premier League matches, including information on match dates, teams, scores, possession percentages, and other relevant metrics. The primary objective is to derive insights related to team performance and match dynamics.

## Data Analysis Objectives

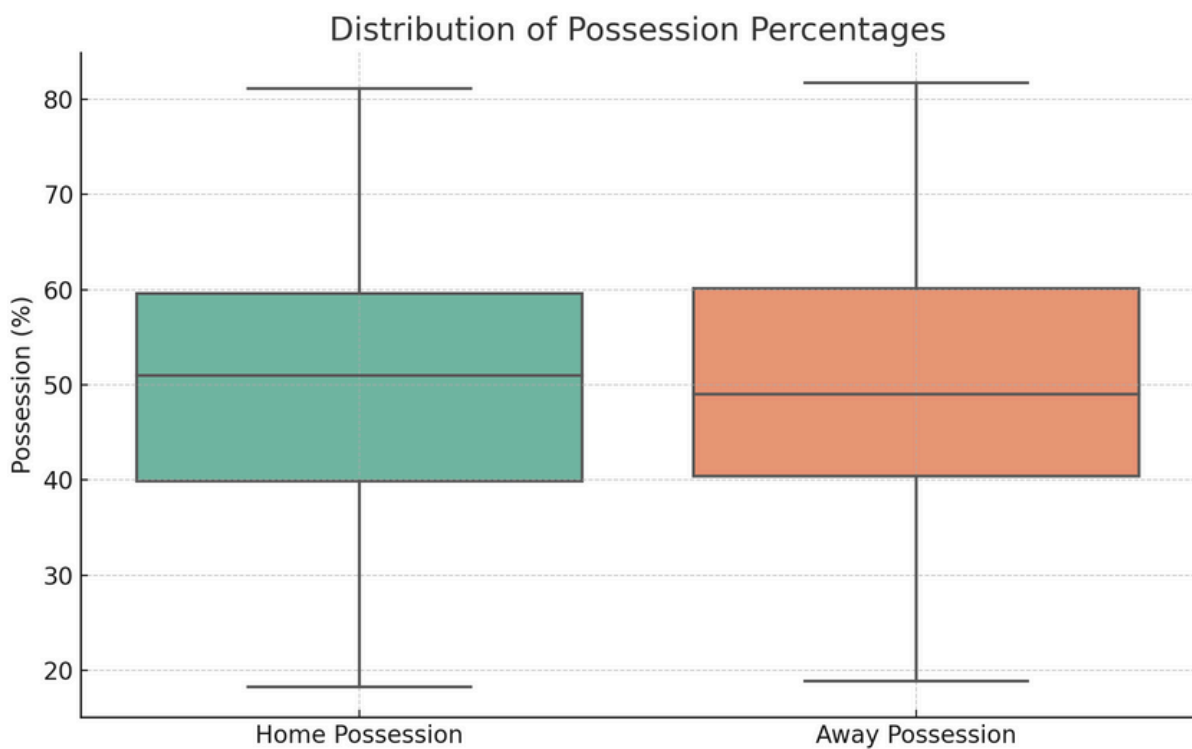
1. Identify trends in team performance.
2. Analyze possession and its correlation with match outcomes.
3. Examine the impact of home advantage.
4. Evaluate the distribution of fouls and disciplinary actions.

# Exploratory Data Analysis

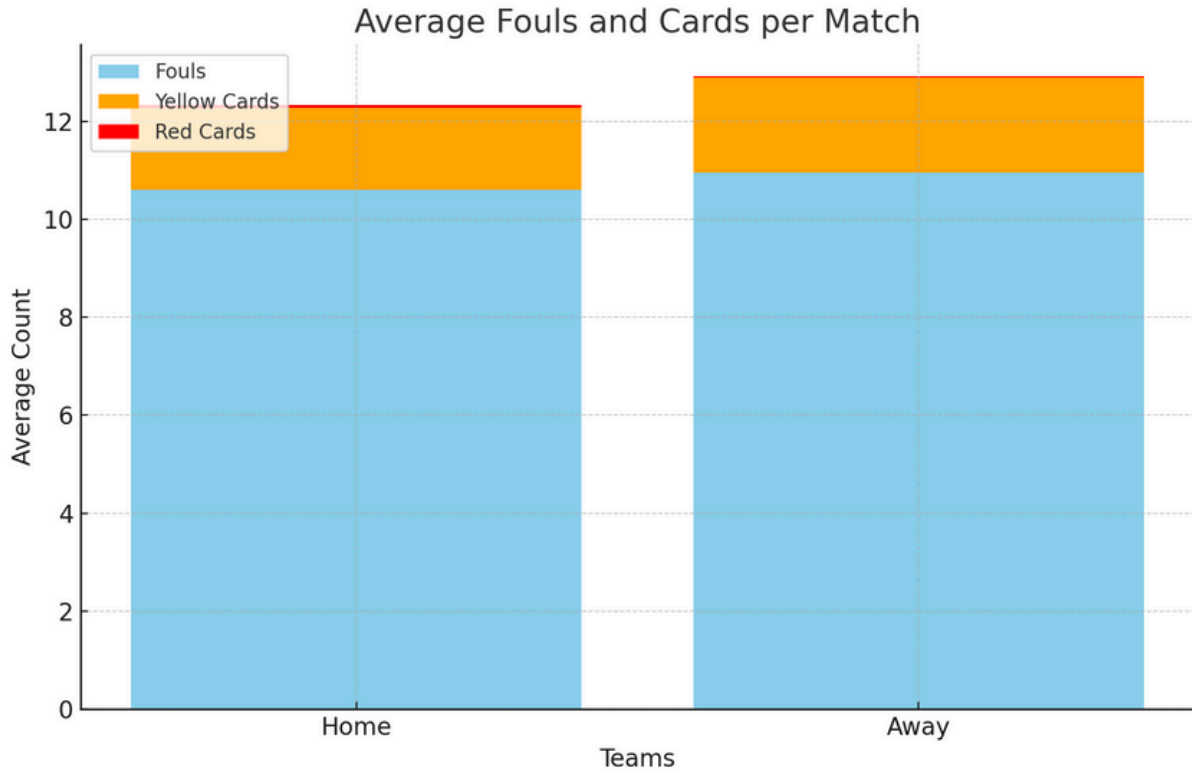
## Goals Distribution



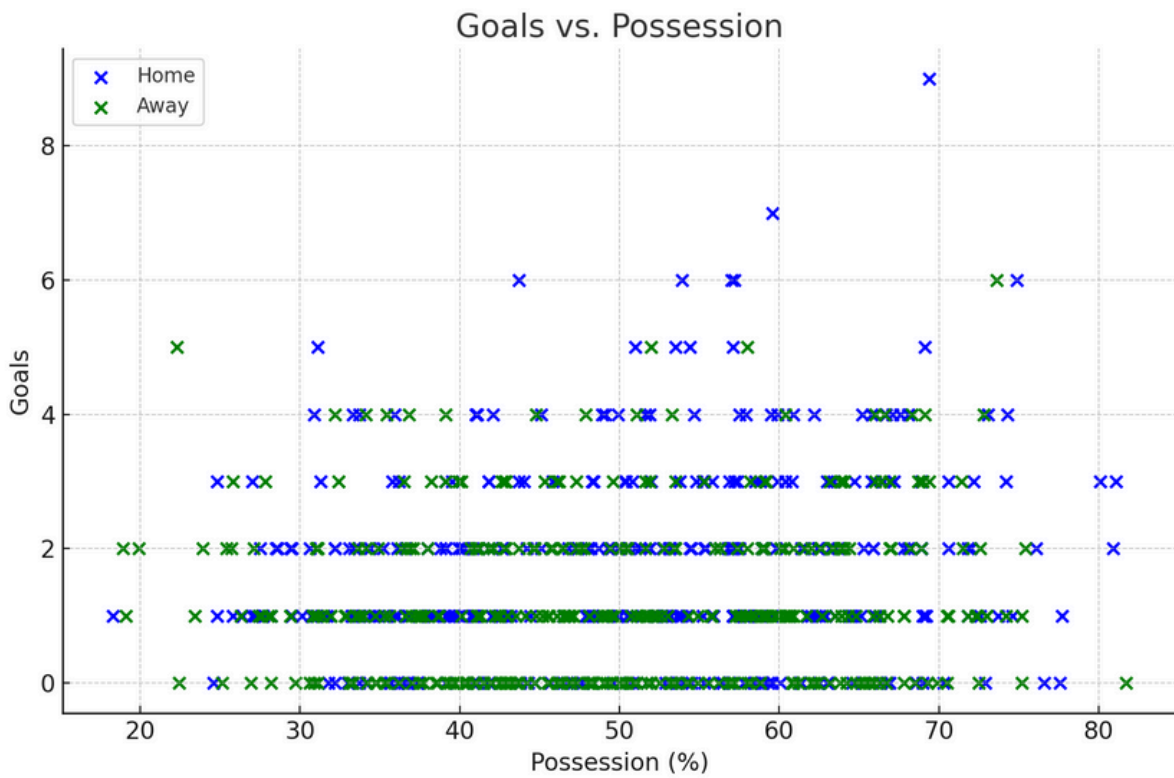
## Possession Boxplot



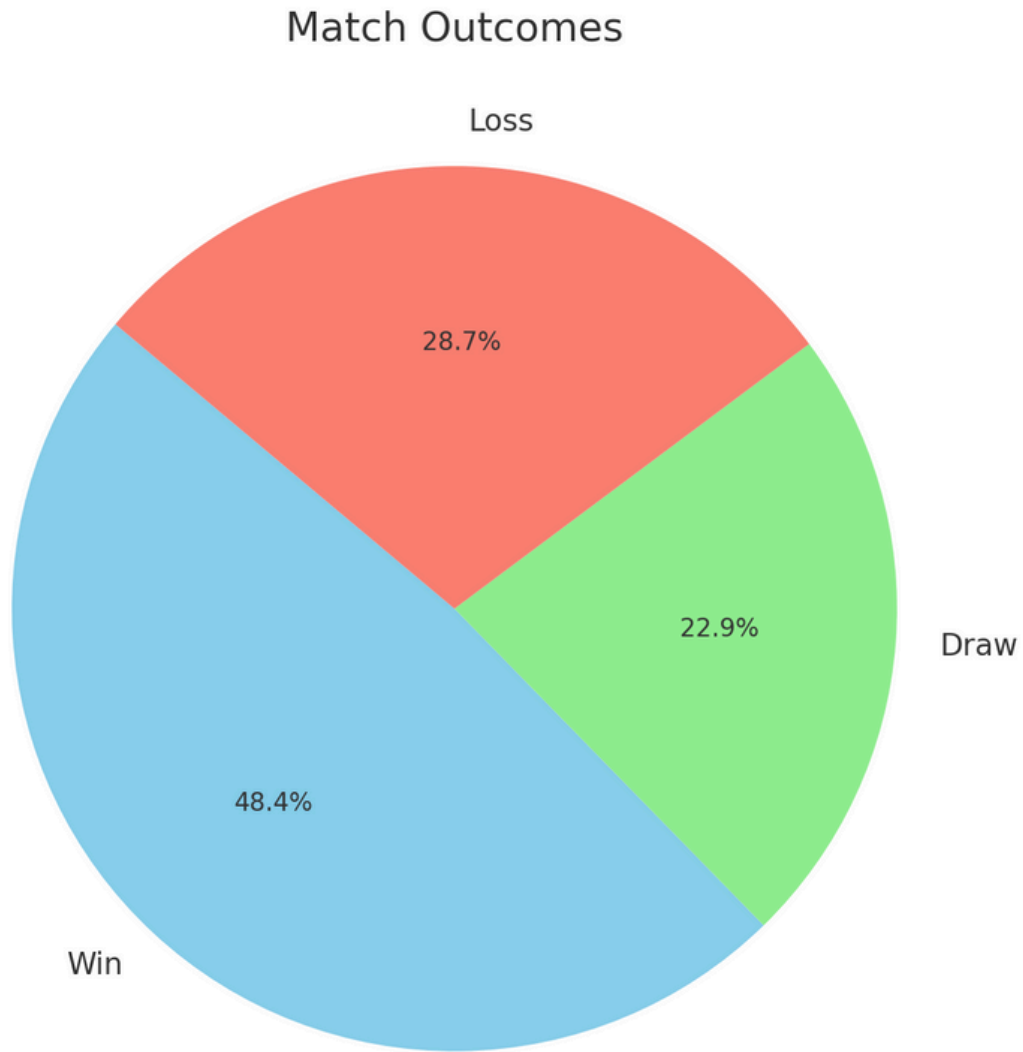
## Fouls and Cards



## Goals vs Possession



## Match Outcomes



## Results

1. Goals vs. Possession: Low positive correlation between possession and goals scored.
2. Home Advantage: Home teams scored more goals and had higher possession on average.
3. Fouls and Discipline: Higher number of fouls generally led to more yellow cards.

## Interpretation

Possession and Goals: Teams with higher possession tend to control the game but it does not always translate to more goals.

Home Advantage: Home teams benefit from familiar surroundings and support, leading to higher win rates.

Disciplinary Actions: Fouls lead to yellow cards, highlighting the importance of disciplined play.

# Comprehensive Data Analysis by Kevyn.ai

## Discussion

The findings underscore the complexity of football matches, where possession is an important but not decisive factor for winning. Home advantage plays a significant role, suggesting strategic preparations for away matches. The correlation between fouls and yellow cards indicates a need for better discipline to avoid penalties.

## Conclusion

This analysis provides a comprehensive understanding of Premier League matches, emphasizing the importance of possession, home advantage, and disciplined play. The insights can guide teams in strategizing for better performance in future matches.